

IBM®

PARTS  
CATALOG

TYPE 11  
ELECTRIC KEY PUNCH

INTERNATIONAL BUSINESS MACHINES CORPORATION  
590 MADISON AVENUE, NEW YORK 22, NEW YORK

COVER VIEW

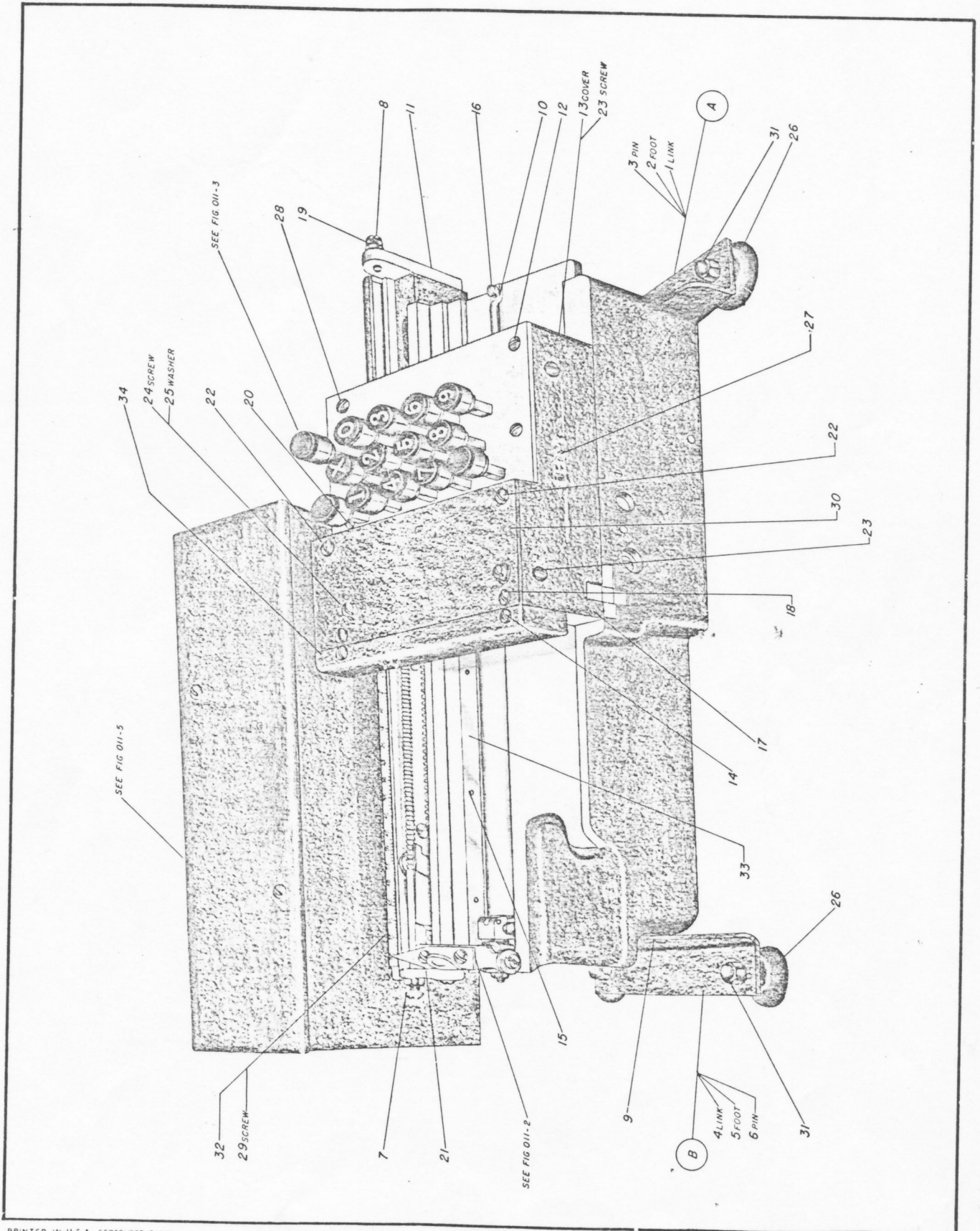


FIG. OII-1





**TYPE 11**

**ELECTRIC KEY PUNCH**

REF. NO.	PART NO.	PART NAME	REF. NO.	PART NO.	PART NAME
A	7945	SPACE KEY PLUNGER ASSEMBLY	J	7963	MECHANISM HOLDER TOP PLATE ASSEMBLY
	6738	KEY CUP	38	6887	TOP PLATE SPACER
	6740	KEY PLUNGER	39	7024	TOP PLATE
B	45289	REAR WALL PLATE ASSEMBLY	40	9817	INTERPOSER SPRING PLATE
	58	DOG CARRIER STOP PIN	41	135402	TOP PLATE SPACER RIVET
	6842	DOG CARRIER			
	6899	DOG CARRIER PIVOT SCREW NUT			
	6899	DOG CARRIER ADJ SCREW LINK NUT			
	7958	WALL PLATE ASSEMBLY - REAR	42	7033	KEY PLUNGER RELEASE SCREW - REAR
	10775	DOG CARRIER PIVOT SCREW	43	6713	KEY PLUNGER PLATE SPACER - REAR
	104501	DOG CARRIER ADJ SCREW	44	6615	SPACE KEY STOP SPACER
	163899	DOG CARRIER PIVOT LOCKWASHER	46	8009	KEY BUTTON - X
C	7953	GUIDE COMB ASSEMBLY	47	8010	KEY BUTTON - 0
	6774	INTERPOSER GUIDE COMB	48	8011	KEY BUTTON - 1
	143795	LINK PIVOT PIN	49	8012	KEY BUTTON - 2
			50	8013	KEY BUTTON - 3
			51	8014	KEY BUTTON - 4
D	142385	SPACE BAR ASSEMBLY	52	8015	KEY BUTTON - 5
	6899	NUT	53	8016	KEY BUTTON - 6 AND 9
	118831	SCREW ARM	54	8017	KEY BUTTON - 7
	142383	SPACE ARM BLOCK	55	8018	KEY BUTTON - 8
	142384	SPACE ARM BLOCK	56	8019	KEY BUTTON - BLANK
	159260	ADJUSTING SCREW	57	8445	KEY CUP RELEASE SCREW
	163899	LOCKWASHER	58	111886	KEY PLUNGER PLATE SCREW
E	21208	RELEASE KEY BELL CRANK & SPR. PIN ASSEM	59	6843	DOG CARRIER SPRING SPACER - FRONT
	21203	SPRING PIN	60	7385	KEY PLUNGER PLATE SPACER - FRONT
	21199	KEY BELL CRANK	61	6903	WALL PLATE DOWEL PIN
F	21186	BELL CRANK MOUNTING BLOCK ASSEMBLY	62	9818	INTERPOSER SPRING SCREW - REAR
	21166	MOUNTING BLOCK	63	6762	INTERPOSER LOCKING LINK
	21169	PIVOT	64	7031	COVER PLATE - RIGHT
	21170	SCREW	65	159238	KEY INTERPOSER
	148913	BELL CRANK ASSEMBLY	66	180941	ESCAPE KEY INTERPOSER
G	21185	BELL CRANK MOUNTING BLOCK ASSEMBLY	67	142387	PIVOT SCREW
	10972	BELL CRANK ASSEMBLY	68	6755	RELEASE KEY BELL CRANK SPRING
	21167	MOUNTING BLOCK	70	21200	BELL CRANK MOUNTING BLOCK SCREW
	21168	PIVOT	71	21171	SPACE BAR LOCKWASHER
	21170	SCREW	72	16673	SPACE BAR LOCKWASHER
	148913	BELL CRANK ASSEMBLY	73	163899	SPACE BAR PIVOT NUT
H	19136	GUIDE PLATE ASSEMBLY	74	6879	KEY PLUNGER GUIDE PLATE SUPPORT
	6850	CONTACT FRAME BEARING FRONT	75	2629	RELEASE BAR GUIDE SCREW
	7025	PLUNGER GUIDE PLATE	76	103215	SKIP LIFTER GUIDE
	8467	RELEASE KEY PLUNGER BUSHING	77	103216	RELEASE BAR GUIDE
	10633	SPRING PIN	78	12141	CONTACT LEVER FRAME
	12104	CONTACT PLATE BEARING	79	18902	PIVOT SHAFT
	21202	RELEASE KEY BELL CRANK BRACKET RIVET	80	22339	CONTACT LEVER FRAME PIVOT SHAFT NUT
	1103321	RIVET	81	16788	SPACE KEY BELL CRANK SPRING
			82	18189	GUIDE PLATE SUPPORT SCREW
			83	132199	RELEASE BAR LOCKWASHER
			84	15835	COVER PLATE SCREW
			85		

# KEY PLUNGER & GUIDE PLATE ASSEM

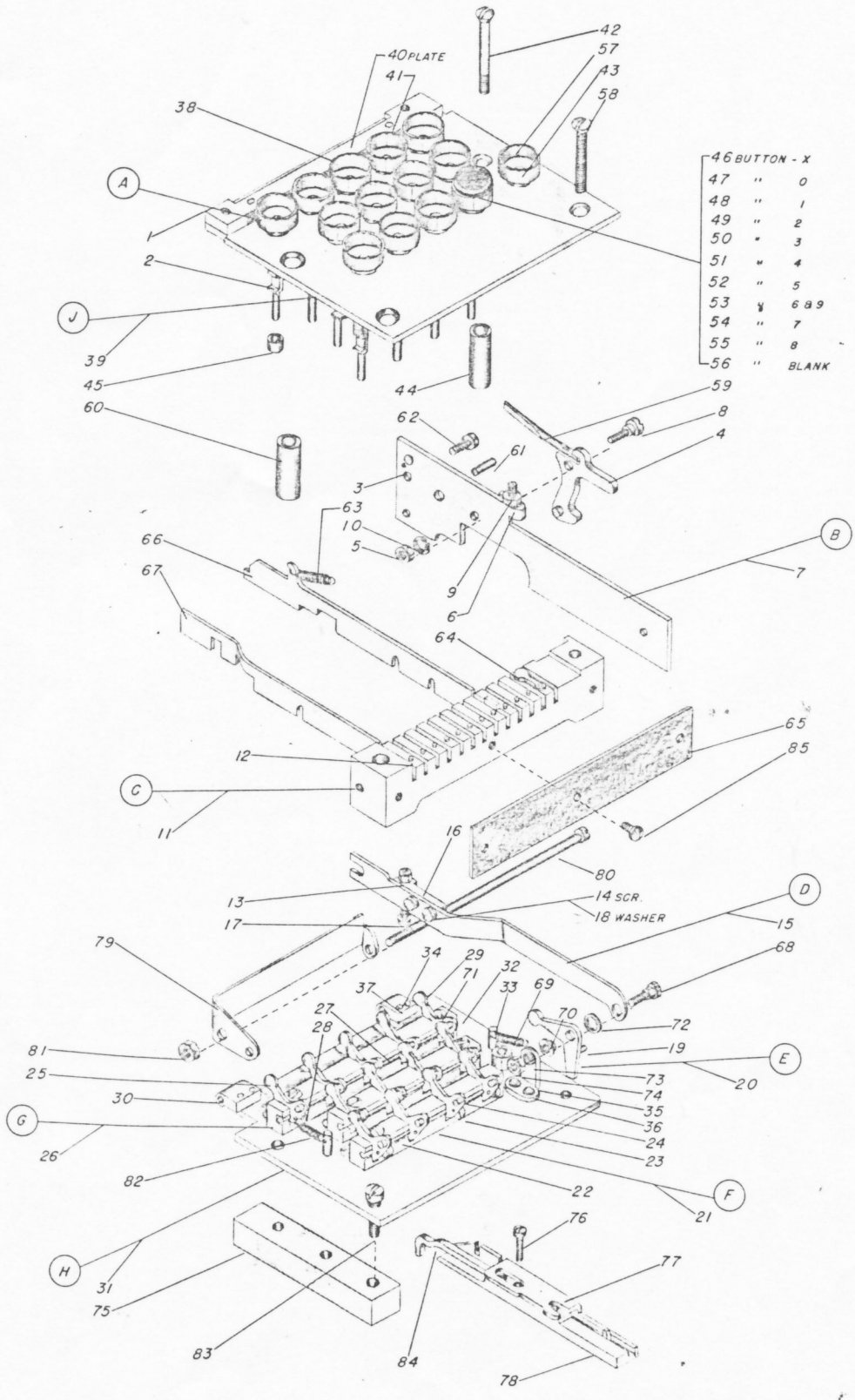


FIG. OII-3

REF. NO. PART NO. PART NAME

REF. NO.	PART NO.	PART NAME	REF. NO.	PART NO.	PART NAME
A	1	7973 PUNCH MAGNET CONTACT ASSEMBLY	D1	1796661	ARMATURE ASSEMBLY
	2	1974 CONTACT INSULATOR BLOCK	37	154115	ARMATURE BEARING
	3	9866 INSULATING PIN	38	173471	CONTACT HOOK ASSEMBLY
	4	11900 CONTACT SPRING	E	7959	RIVET
	5	100134 CONTACT SCREW INSULATION	40	6885	CONTACT HOOK
	6	138709 CONTACT SPRING SUPPORT ASSEMBLY	F	144163	ARMATURE STOP ASSEMBLY
	7	144116 CONTACT BLADE SUPPORT	41	144172	ARMATURE STOP ROD CUSHION HOLDER
	8	141578 PUNCH MAGNET CONTACT BRACKET	42	144239	ARMATURE STOP CUSHION
	9	173205 CONTACT BLADE SCREW SUPPORT ASSEMBLY	43	144356	ARMATURE STOP BUTTON
A1	10	180820 CONTACT POINTING ASSEMBLY			
	11	75157 CONTACT SPRING			
A2	12	180821 CONTACT POINTING ASSEMBLY			
	13	75161 CONTACT SPRING			
A3	14	180823 CONTACT SPRING			
	15	180825 CONTACT HOOK SPRING ASSEMBLY	44	7026	BASE
	16	13205 CONTACT INSULATION BUSHING	45	6913	MAGNET YOKE ADJ BUSHING
	17	134962 CONTACT SPRING REINFORCEMENT	46	8163	MAGNET NUT
	18	180822 CONTACT INSULATOR	47	9092	MAGNET YOKE ADJ LOCKWASHER
	19	148045 CONTACT HOOK SPRING	48	38391	MAGNET YOKE ADJ SCREW
		CONTACT HOOK SPRING	49	114104	ARMATURE PIVOT SET SCREW DISC
		SPRING RIVET	50	126345	ARMATURE PIVOT SET SCREW
B	7984	MAGNET YOKE ASSEMBLY - 110V	51	12131	CONTACT HOOK SPRING PIN
C	20	7985 MAGNET YOKE ASSEMBLY - 220V	52	92	CONTACT HOOK SPRING
	21	7014 MAGNET YOKE ASSEMBLY - 220V	53	10690	BOTTOM COVER SCREW
	22	49814 MAGNET COIL MOUNTING SCREW	54	294	BOTTOM COVER PLATE
	23	116821 MAGNET COIL - 110V	55	6896	MAGNET CONTACT MOUNTING SCREW
		MAGNET COIL - 220V	56	6832	CONTACT HOOK AND DOG SPRING
D	24	142392 ARMATURE AND TOGGLE ASSEMBLY	57	7016	ARMATURE SHAFT BUSHING
	25	1866 BREAKER PIVOT	58	9092	ARMATURE SHAFT BUSHING
	26	6916 SCREW WASHER	59	221	TOGGLE PIVOT MTG LOCKWASHER
	27	8834 CIRCUIT BREAKER	60	6908	MOTOR BELL SCREW NUT
	28	8836 TOGGLE LINK	61	221	MOTOR BELL SCREW NUT
	29	8836 TOGGLE LINK	62	7297	ARMATURE STOP NUT
	30	11918 ARMATURE LINK STUD - SHORT	63	10310	ARMATURE STOP NUT
	31	103372 LINK STUD ELASTIC STOP NUT	64	34821	RETURN SPRING LOCKWASHER
	32	104667 ARMATURE LINK PIVOT NUT	65	71	RETURN SPRING COTTER PIN
	33	142391 TOGGLE PIVOT	66	142493	MOTOR PLATE LINK ECCENTRIC SCREW
	34	151981 TOGGLE LINK OIL SPRING PIN	67	142382	MOTOR PLATE LINK ECCENTRIC SCREW
	35	151983 SPRING AND BREAKER SCREW	68	6915	MOTOR BELL CRANK ECCENTRIC SCREW
	36	1633055 CIRCUIT BREAKER SCREW	69	11919	MOTOR BELL CRANK ECCENTRIC SCREW
			70	14221	MOTOR BELL CRANK ECCENTRIC SCREW
			71	7031	MOTOR BELL CRANK ECCENTRIC SCREW
			72	158065	CONDENSER MOUNTING SCREW
			73	170407	CONDENSER - .025 MFD
			74	156807	CONDENSER COMB. - 10 OHMS - 5 MFD

PARTS NOT SHOWN ON SUB-ASSEMBLIES

# ARMATURE & TOGGLE ASSEM'S

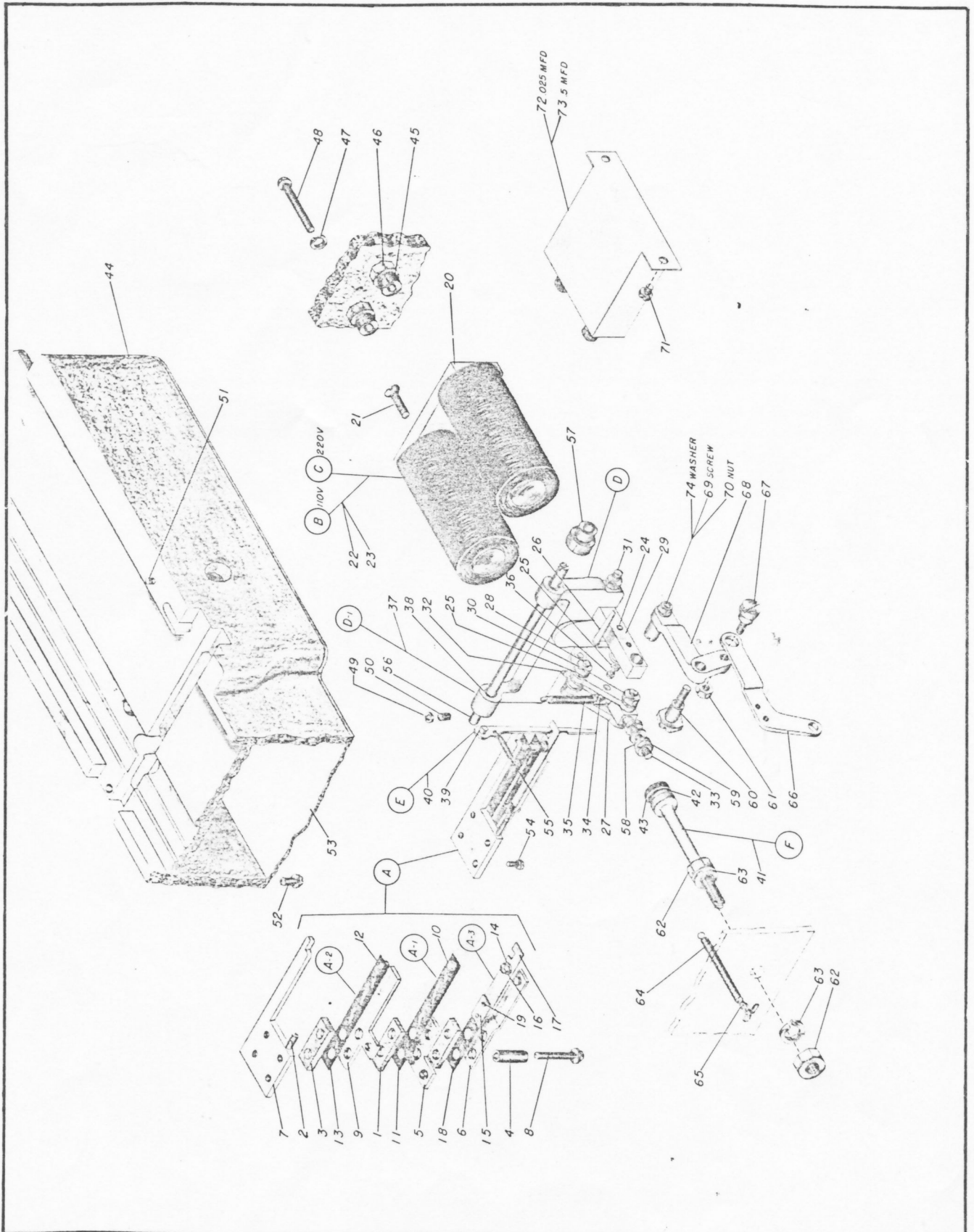


FIG. OII-4



REF. NO. PART NO. PART NAME

A 1 14479 MAIN SPRING ASSEMBLY

A 2 7956 GEAR ASSEMBLY

A 3 11447 MAIN SPRING BOX ASSEMBLY

A 4 6838 MAIN SPRING BOX

A 5 6877 PIN

A 6 11444 STUD

A 7 11446 PLATE

A 8 11447 STUD

B 10976 RACK GUARD GUIDE ASSEMBLY

B 8 6991 RACK GUARD

B 9 6992 RACK GUARD

NS 167694 RACK GUIDE AND GUARD BUTTON

C 7978 FUSE HOLDER ASSEMBLY

C 11 294 KNIFE BLADE CONTACT SCREW

C 12 6971 KNIFE BLADE CONTACT - LEFT

C 13 6972 KNIFE BLADE CONTACT - RIGHT

C 14 6970 FUSE HOLDER

C 15 6973 FUSE CONNECTION

C 16 7041 FUSE CLIP NUT

C 17 7058 CONTACT SCREW - SHORT

C 18 7059 FUSE CLIP SCREW

C 19 100952 WIRE CONNECTION

C 20 105047 LOCK WASHER

C 21 160894 FUSE CLIP SCREW

D 188139 GOVERNOR ASSEMBLY

D 23 11462 COVER

D 24 33245 CUTTER PIN

D 25 103232 LONG SPACER

D 26 103237 SHOE

D 27 147898 PINION SHAFT ASSEMBLY

D 28 167980 SHOE SUPPORT ASSEMBLY

D 29 167988 RETAINING WASHER

D 30 188108 HOUSING ASSEMBLY

D 31 188110 SHORT SPACER

D 31 196383 DRIVE HUB ASSEMBLY

E 170111 SELENIUM RECTIFIER ASSEM 110V 25-50-60 CY.

E 170118 SELENIUM RECTIFIER ASSEM 220V - 60 CY.

E 170119 SELENIUM RECTIFIER ASSEM 220V - 25 CY.

E 22 CABLE CLAMP SCREW

E 23 MOUNTING SCREW WASHER

E 24 CABLE CLAMP WASHER

E 25 1413 CABINET COVER SCREW

E 26 2899 TRANSFORMER MOUNTING NUT

37 SERVICE CORD

38 FEMALE PLUG

39 CABLE CLAMP SCREW NUT

40 PLUG REINFORCEMENT

41 PLUG REINFORCEMENT

42 CABLE CLAMP

43 CABLE ENTRANCE BUSHING

NS SOLDERLESS CONNECTOR

45 RESISTOR

NS PLATE DRIVE PIN

47 SELENIUM RECTIFIER WAVE STACK

48 CAPACITOR CLAMP

49 CAPACITOR CLAMP

50 FUSED PLUG

NS IDENTIFICATION PLATE

51 AUTO TRANSFORMER 220V - 60 CY

52 170110 AUTO TRANSFORMER 220V - 25 CY

53 170115 CABINET ASSEMBLY

54 170116 SUPPORT BRACKET

55 170117 CABINET COVER

56 SUPPORT BRACKET SCREW NUT

57 SUPPORT BRACKET WASHER

58 SUPPORT BRACKET SCREW

59 CAPACITOR CLAMP SCREW

60 CAPACITOR CLAMP SCREW NUT

61 PARTS NOT SHOWN ON SUB-ASSEMBLIES

62 RACK GUARD AND GUIDE MTG SCREW

63 RACK GUARD & GUIDE MTG DOWEL PIN

64 MARGIN STOP RACK SCREW

65 MARGIN STOP RACK SCREW

66 MARGIN STOP ASSEMBLY

67 MAIN SPRING MOUNTING SCREW

68 REINFORCING MOUNTING LOCKWASHER

69 MOUNTING STUD NUT

70 STUD LOCKWASHER

71 CABINET MOUNTING STUD

72 FUSE HOLDER SCREW

73 FUSE HOLDER SPACER

74 BLOCK INSULATION

75 GOVERNOR MOUNTING SCREW

76 FUSE COVER

77 FUSE COVER

78 RACK GUARD AND GUIDE MTG SCREW

79 MARGIN STOP AND GUIDE MTG SCREW

80 MARGIN STOP

# SEL. RECTIFIER & GOVERNOR ASSEM'S

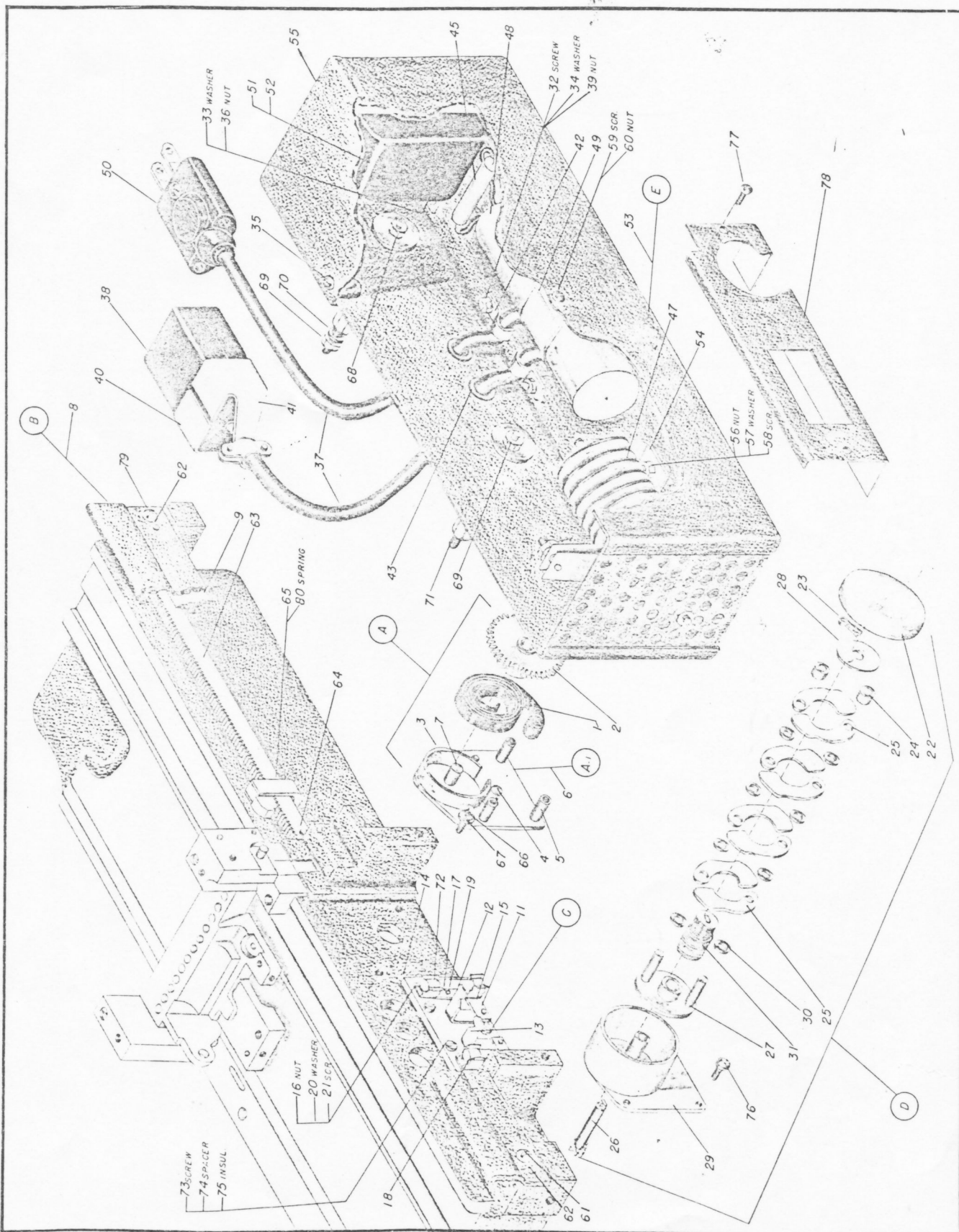


FIG OII-5